

Logo Here

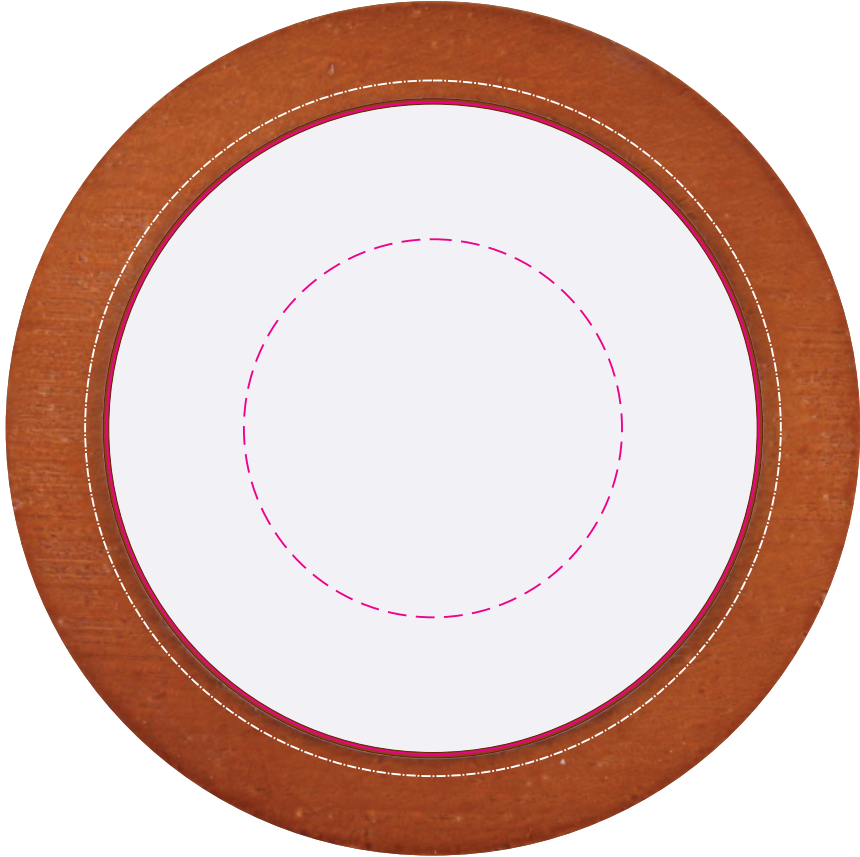
Job # XXXXXX
Cust # XXXX-XC

LL0273 - Wood Ranger Fast Wireless Charger - Wood

Pad Print  PMS XXXc

CMYK Direct Digital 

USB END



Pad/Digital
Print Area: 50mm Diameter
Actual print size: xxmmL x xxmmH

DIGITAL
Edge to Edge
Print Area: 86mm Diameter
Actual print size: xxmmL x xxmmH

Finished print area - Pad/Digital 

Finished print area - Edge to Edge Digital 

Digital Bleed 

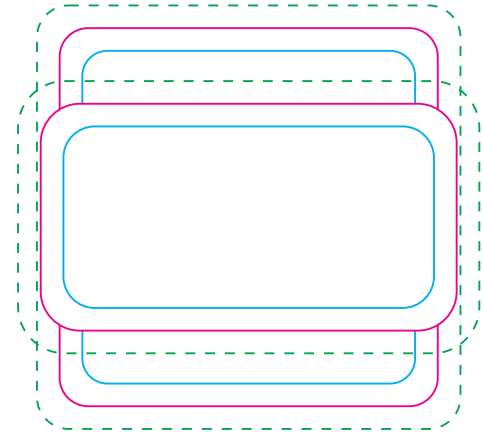
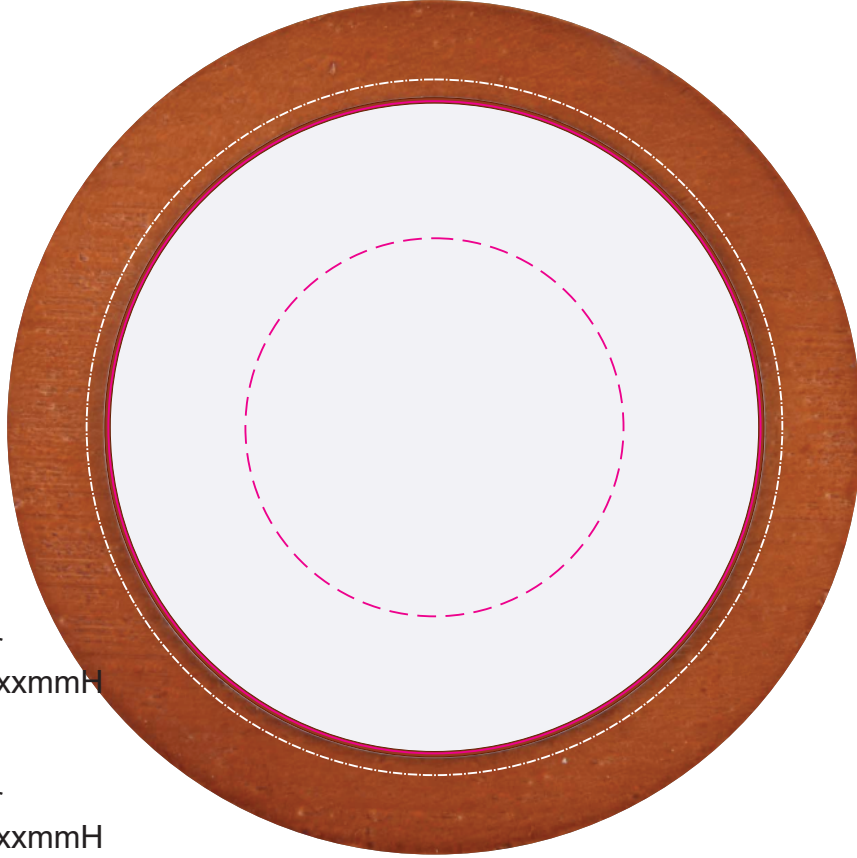
LL0273 - Wood Ranger Fast Wireless Chargerr with Label - Wood + Label

Pad Print  PMS XXXc

CMYK Direct Digital 

CMYK Label 

USB END



Pad/Digital
Print Area: 50mm Diameter
Actual print size: xxmmL x xxmmH

DIGITAL
Edge to Edge
Print Area: 86mm Diameter
Actual print size: xxmmL x xxmmH

Finished print area - Pad/Digital 


Finished print area - Edge to Edge Digital 

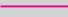
Digital Bleed 

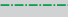
Box Showing at 30% size for positioning

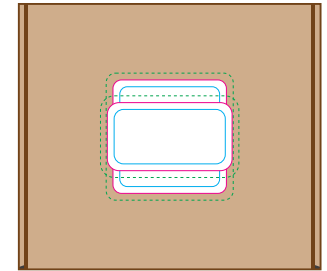
Label
Print Area: 50mmL x 50mmH
Actual print size: xxmmL x xxmmH

Print Area: 55mmL x 30mmH
Actual print size: xxmmL x xxmmH

Max print area for copy & text 

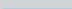
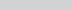
Finished print area 

Label Bleed 





Sleeve
Print Area: 326mmL x 132mmH
Actual print size: xxmmL x xxmmH

Max print area for copy & text 
Finished print area 
Folds 